

Software Switch Utility for Thermal Printer

Version 1.3.x.x

Operating system:

This utility supports Windows 9x/NT/2000/XP/VISTA/WIN7 32Bit & 64Bit.

Support Models:

PP9000 Serial / Parallel / USB / LAN

PP8800 Serial / Parallel / USB / LAN

PP8000 Serial / Parallel / USB / LAN

PP6900 Serial / Parallel / USB / LAN

PP6800 Serial / Parallel / USB / LAN

PP5200E Serial / USB

XP-Printer Serial (2 inch and 3 inch)

HS-Printer Serial (3 inch)

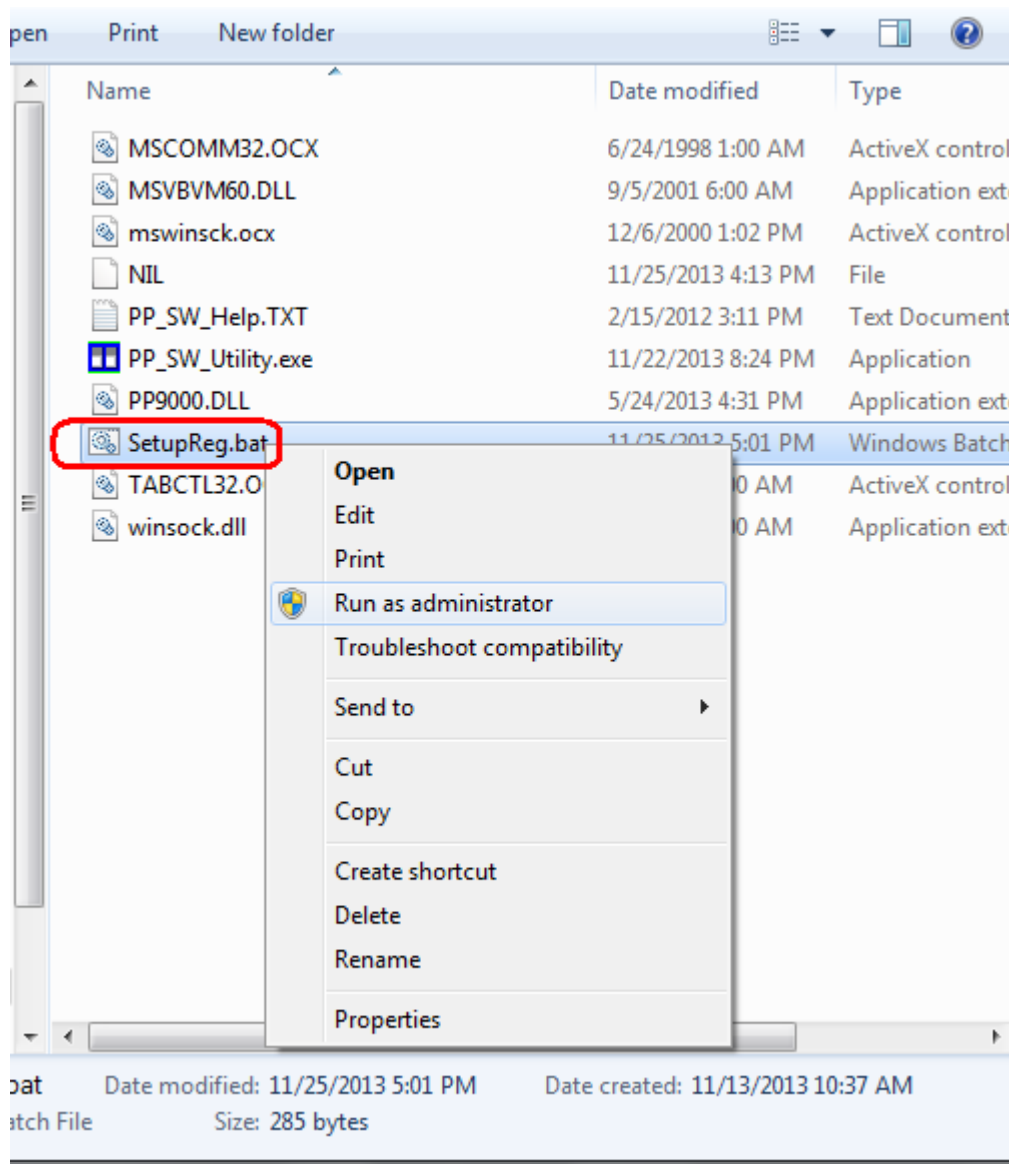
Support Functions:

Function	PP900	PP8800	PP8000	PP6900	PP6800	PP5200 e	XPrinter	HS 3" Printer
Printer_Information	V	V	V	V	V	V	V	V
Software_Switch1							V	
Software_Switch2	V	V		V	V	V	V	V
Software_Switch3	V	V		V	V	V		V
Software_Switch4	V	V		V		V		V
Additional_Software_Switch	V	V	V	V	V	V	V	V
Log_History	V	V	V	V	V	V	V	V
Communtion_Test	V	V	V	V	V	V	V	V
Self_Test	V	V	V	V	V	V	V	V
Read_Settings	V	V	V	V	V	V	V	V
Write_Settings	V	V	V	V	V	V	V	V
Exit	V	V	V	V	V	V	V	V
Help	V	V		V	V	V	V	V

Starting Software Switch Setting Utility

- a. Click the PP_SW_Utility.exe program.

If there is error occur when starting this utility, please run the "SetupReg.bat" and restart this utility.



- b. Click the "**Printer port selection**" combo to select the interface of printer.

You can set the communication parameters used to communicate with the printer and execute the **communication test** using the parameter you have set.

. TCP/IP: Use for LAN type printer.

Please confirm your TCP/IP information.

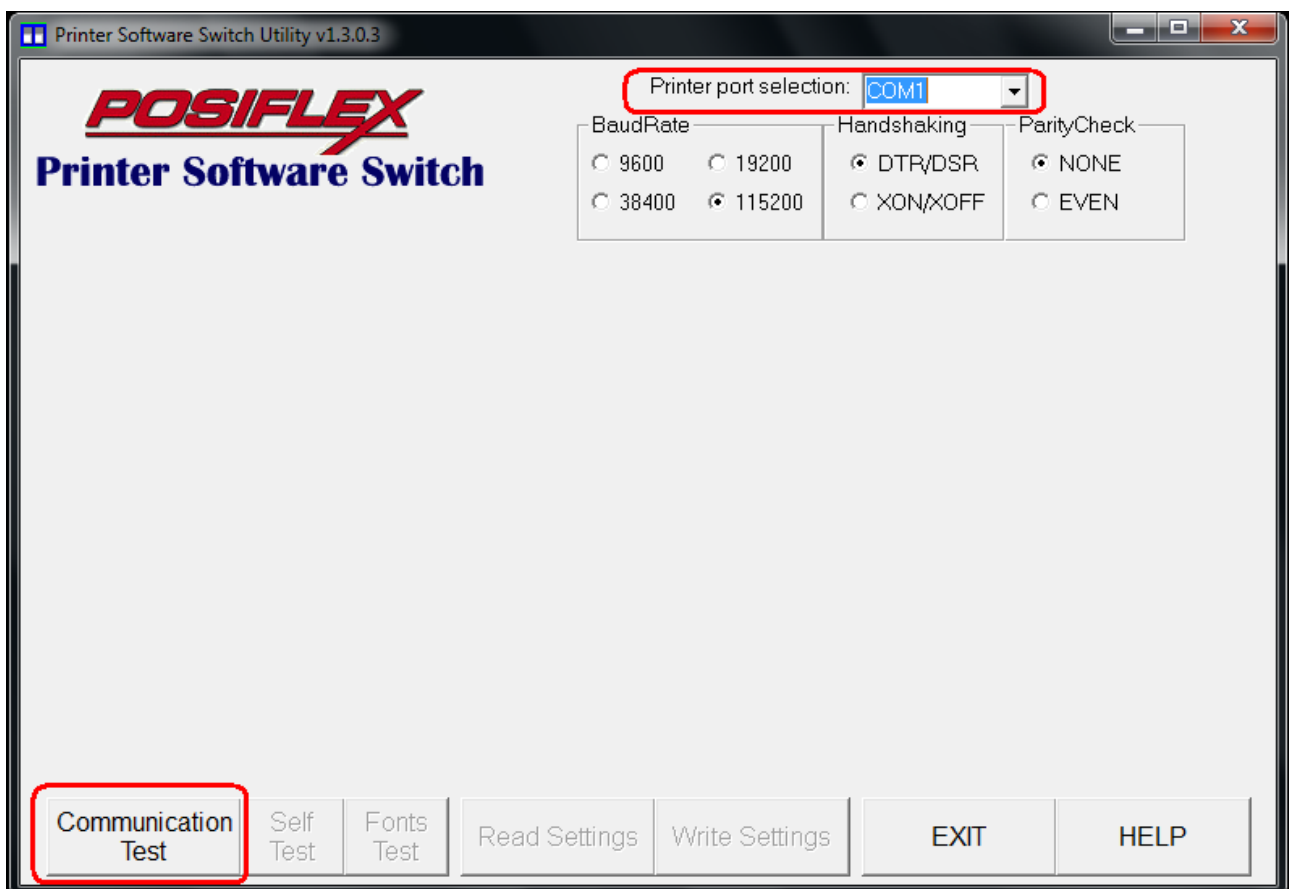
. LPT1: Use for PARALLEL type printer.

. USB: Use for PP9000U/PP8800U/PP6900U true USB type printer.

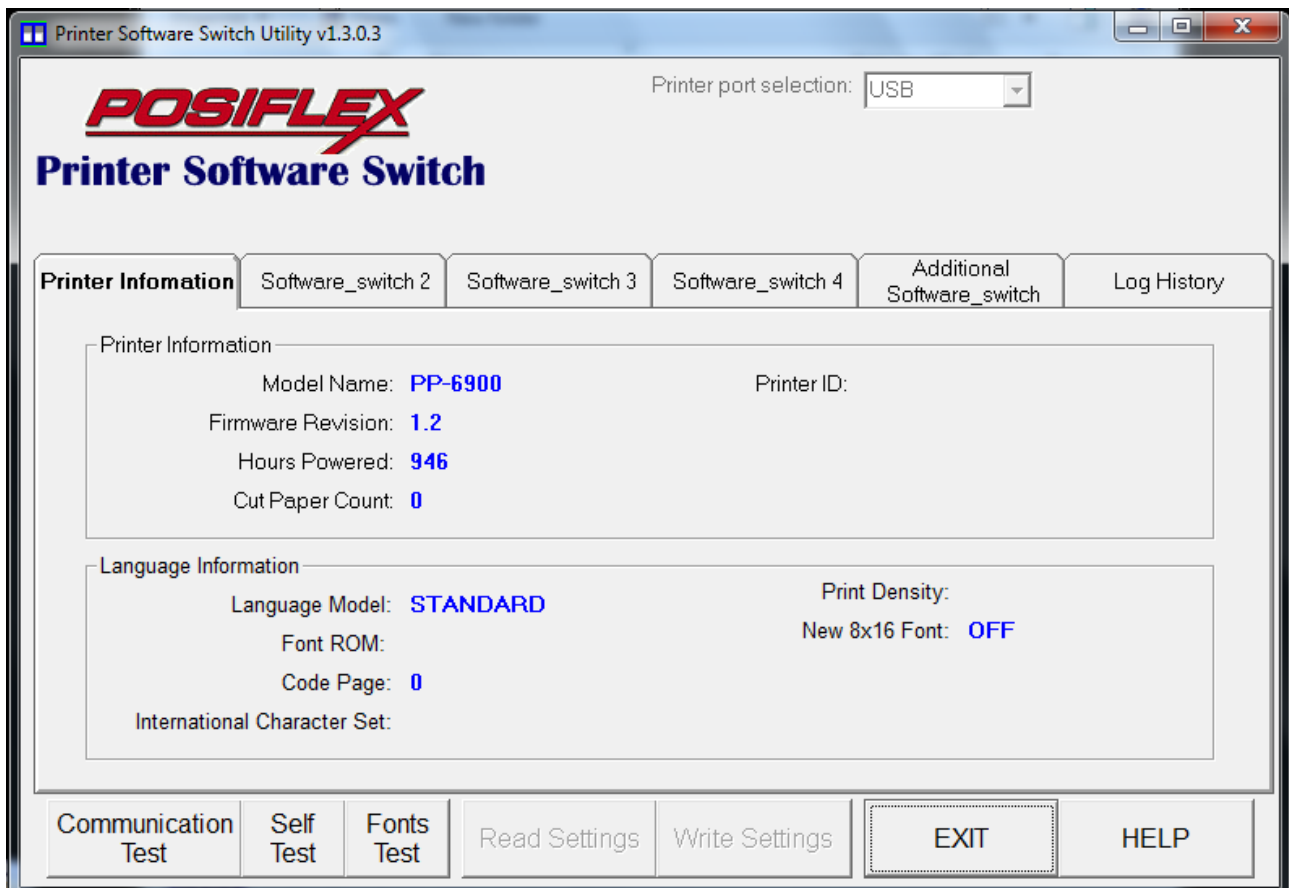
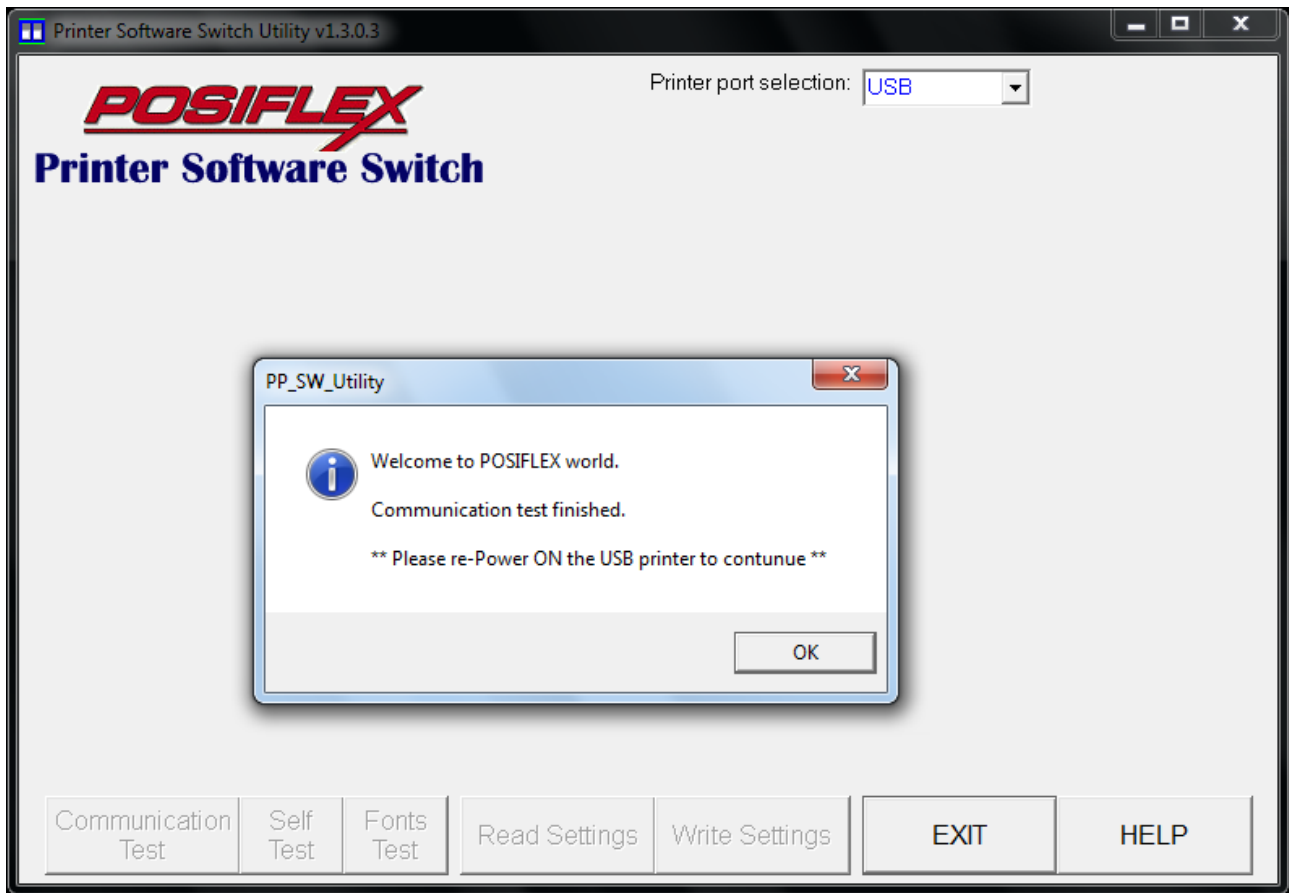
. COM1 ~ COM16:

Use for SERIAL type printer.

Please confirm your comport settings.



- c. After click the **Communication Test** button, the screen shot will be displayed below.



Command buttons.

- a. **"Communication Test" button:** Confirm whether the connected printer is PP or not and retrieve all printer information.
 - . SUCCESS
 - Pop up message below.
 - [Welcome to POSIFLEX world.]
 - [Communication test finished.]
 - . FAILURE
 - Pop up message below or other error message.
 - [Please connected POSIFLEX POS printer before test.]
- b. **"Self Test" button:** Print the self-test page of printer.
- c. **"Font Test" button:** Print some font test data of printer.
- d. **"Read Settings" button:** Acquire the set value being saved by the connected printer and display them on the screen.
- e. **"Write Settings" button:** Set the value that can be updated in the value displayed on the screen to the printer.
- f. **"EXIT" button:** Exit this utility.
- g. **"HELP" button:** Display this document.

Software switch functions

a. Printer Information

"Model Name": display the printer model name.
 "Firmware Revision": display the printer firmware version.
 "HoursPowered": display the powered on hours of printer.
 "CutPaperCount": display the cut paper count of printer.

b. Language Information

"Language Model": display the language of printer.
 "Font ROM": display the font rom type when printer is downloaded big5 or gb2312.
 "International Character Set": display the international characters set of printer.

c. Software switch 1:

This software switch is valid only for **XP-Printer**. When the pin 1 of software switch 2 is been set to ON, then the software switch 1 will be valid instead of hardware switch 1.

. Software switch 1 definition

"1 OFF", "2 OFF"	-> Baud Rate = 19200
"1 OFF", "2 ON"	-> Baud Rate = 115200
"1 ON", "2 OFF"	-> Baud Rate = 9600
"1 ON", "2 ON"	-> Baud Rate = 38400
"3 OFF"	-> Don't cut paper when cover closed.
"3 ON"	-> Cut Paper When cover closed.
"4 OFF"	-> Partial cut paper.
"4 ON"	-> Full cut paper
"5 OFF"	-> Busy condition = When buffer full or off line
"5 ON"	-> Busy condition = When buffer full
"6 OFF"	-> Paper Feed before cut paper = Enabled
"6 ON"	-> Paper Feed before cut paper = Disabled
"7 OFF"	-> With Auto Cutter
"7 ON"	-> Without Auto Cutter
"8 OFF"	-> Paper Feed Backward before print = Enabled
"8 ON"	-> Paper Feed Backward before print = Disabled

d. Software switch 2: This software switch is valid for PP-9000 PP-8800 PP-6900 PP-6800 and XP-Printer.

. PP-9000 Software switch 2 definition

"1 OFF"	-> Paper Feed Back = Enabled
"1 ON"	-> Paper Feed Back = Disabled
"2 OFF"	-> Don't cut paper when cover closed.
"2 ON"	-> Cut Paper When cover closed.
"3 OFF"	-> Partial cut paper.
"3 ON"	-> Full cut paper
"4 OFF"	-> Paper Feed before cut paper = Enabled
"4 ON"	-> Paper Feed before cut paper = Disabled
"5 OFF"	-> Busy condition = When buffer full or off line
"5 ON"	-> Busy condition = When buffer full
"6 OFF"	-> <CR> Invalid
"6 ON"	-> <CR> Valid
"7 OFF"	-> Parity check = NONE
"7 ON"	-> Parity check = EVEN
"8 OFF"	-> Handshaking = DTR/DSR
"8 ON"	-> Handshaking = XON/XOFF

. PP-8800 Software switch 2 definition

"1 OFF"	Reserve
"2 OFF"	-> Don't cut paper when cover closed.
"2 ON"	-> Cut Paper When cover closed.
"3 OFF"	Reserve
"4 OFF"	-> Paper Feed before cut paper = Enabled
"4 ON"	-> Paper Feed before cut paper = Disabled
"5 OFF"	-> Busy condition = When buffer full or off line
"5 ON"	-> Busy condition = When buffer full
"6 OFF"	-> <CR> Invalid
"6 ON"	-> <CR> Valid
"7 OFF"	-> Parity check = NONE
"7 ON"	-> Parity check = EVEN
"8 OFF"	-> Handshaking = DTR/DSR
"8 ON"	-> Handshaking = XON/XOFF

. PP-6900 Software switch 2 definition

"1 OFF"	Reserve
"2 OFF"	-> Don't cut paper when cover closed.
"2 ON"	-> Cut Paper When cover closed.
"3 OFF"	Reserve
"4 OFF"	-> Paper Feed before cut paper = Enabled
"4 ON"	-> Paper Feed before cut paper = Disabled
"5 OFF"	-> Busy condition = When buffer full or off line
"5 ON"	-> Busy condition = When buffer full
"6 OFF"	-> <CR> Invalid
"6 ON"	-> <CR> Valid
"7 OFF"	-> Parity check = NONE
"7 ON"	-> Parity check = EVEN
"8 OFF"	-> Handshaking = DTR/DSR
"8 ON"	-> Handshaking = XON/XOFF

. PP-6800 Software switch 2 definition

"1 OFF", "2 OFF"	-> Print Density = NORMAL
"1 OFF", "2 ON"	-> Unknown
"1 ON", "2 OFF"	-> Print Density =HIGH QUALITY
"1 ON", "2 ON"	-> Print Density =HIGH QUALITY
"3 OFF"	-> Don't cut paper when cover closed.
"3 ON"	-> Cut Paper When cover closed.
"4 OFF"	-> Partial cut paper.
"4 ON"	-> Full cut paper
"5 OFF"	-> Raster bitmap print mode = Batch printing
"5 ON"	-> Raster bitmap print mode = Line printing
"6 OFF"	-> Parity check = NONE
"6 ON"	-> Parity check = EVEN
"7 OFF"	-> Handshaking = DTR/DSR
"7 ON"	-> Handshaking = XON/XOFF
"8 OFF"	-> <CR> Invalid
"8 ON"	-> <CR> Valid

. XP-Printer Software switch 2 definition

"1 OFF"	-> Hardware Switch1 = Valid
"1 ON"	-> Hardware Switch1 = Invalid (Software switch instead of hardware switch)
"2 OFF"	-> Fixed to OFF
"3 OFF"	-> Fixed to OFF
"4 OFF"	-> Fixed to OFF
"5 OFF"	-> Raster bitmap print mode = Batch printing
"5 ON"	-> Raster bitmap print mode = Line printing
"6 OFF"	-> Parity check = NONE
"6 ON"	-> Parity check = EVEN
"7 OFF"	-> Handshaking = DTR/DSR
"7 ON"	-> Handshaking = XON/XOFF
"8 OFF"	-> <CR> Invalid
"8 ON"	-> <CR> Valid

. HS 3 inch Printer Software switch 2 definition

"1 OFF"	Reserved
"2 OFF"	-> Paper width = 80 mm
"2 ON"	-> Paper width = 58 mm
"3 OFF"	-> Printable width = 512dots
"3 ON"	-> Printable width = 576dots
"4 OFF"	-> Paper Feed Back = Enable
"4 ON"	-> Paper Feed Back = Disable
"5 OFF"	-> Raster bitmap print mode = Batch printing
"5 ON"	-> Raster bitmap print mode = Line printing
"6 OFF"	-> Parity check = NONE
"6 ON"	-> Parity check = EVEN
"7 OFF"	-> Handshaking = DTR/DSR
"7 ON"	-> Handshaking = XON/XOFF
"8 OFF"	-> <CR> Invalid
"8 ON"	-> <CR> Valid

e. Software switch 3:

. PP-9000 Software switch 3 definition

"1 OFF"	-> Paper Feed Backward before print = Enabled
"1 ON"	-> Paper Feed Backward before print = Disabled
"2 OFF" "3 OFF" "4 OFF"	-> Print Speed = 300
"2 ON " "3 OFF" "4 OFF"	-> Print Speed = 280
"2 OFF" "3 ON" "4 OFF"	-> Print Speed = 250
"2 ON" "3 ON" "4 OFF"	-> Print Speed = 220
"2 OFF" "3 OFF" "4 ON"	-> Print Speed = 200
"2 ON" "3 OFF" "4 ON"	-> Print Speed = 180
"5 OFF" "6 OFF" "7 OFF" "8 OFF"	-> Print Density = 100%
"5 ON" "6 OFF" "7 OFF" "8 OFF"	-> Print Density = 105%
"5 OFF" "6 ON" "7 OFF" "8 OFF"	-> Print Density = 110%
"5 ON" "6 ON" "7 OFF" "8 OFF"	-> Print Density = 115%
"5 OFF" "6 OFF" "7 ON" "8 OFF"	-> Print Density = 120%
"5 ON" "6 OFF" "7 ON" "8 OFF"	-> Print Density = 125%
"5 OFF" "6ON" "7 ON" "8 OFF"	-> Print Density = 130%
"5 ON" "6 ON" "7 ON" "8 OFF"	-> Print Density = 95%
"5 OFF" "6 OFF" "7 OFF" "8 ON"	-> Print Density = 90%
"5 ON" "6 OFF" "7 OFF" "8 ON"	-> Print Density = 85%
"5 OFF" "6 ON" "7 OFF" "8 ON"	-> Print Density = 80%

. PP-8800 Software switch 3 definition

"1 OFF"	-> Paper Feed Backward before print = Enabled
"1 ON"	-> Paper Feed Backward before print = Disabled
"2 OFF" "3 OFF" "4 OFF"	Reserve
"5 OFF" "6 OFF" "7 OFF" "8 OFF"	-> Print Density = 100%
"5 ON" "6 OFF" "7 OFF" "8 OFF"	-> Print Density = 105%
"5 OFF" "6 ON" "7 OFF" "8 OFF"	-> Print Density = 110%
"5 ON" "6 ON" "7 OFF" "8 OFF"	-> Print Density = 115%
"5 OFF" "6 OFF" "7 ON" "8 OFF"	-> Print Density = 120%
"5 ON" "6 OFF" "7 ON" "8 OFF"	-> Print Density = 125%
"5 OFF" "6 ON" "7 ON" "8 OFF"	-> Print Density = 130%
"5 ON" "6 ON" "7 ON" "8 OFF"	-> Print Density = 95%
"5 OFF" "6 OFF" "7 OFF" "8 ON"	-> Print Density = 90%
"5 ON" "6 OFF" "7 OFF" "8 ON"	-> Print Density = 85%
"5 OFF" "6 ON" "7 OFF" "8 ON"	-> Print Density = 80%

. PP-6900 Software switch 3 definition

"1 OFF"	-> Raster Bitmap Printing = Batch Print
"1 ON"	-> Raster Bitmap Printing = Line Print
"2 OFF"	-> High Quality Print (120mm/s) = Disabled
"2 ON"	-> High Quality Print (120mm/s) = Enabled
"3 OFF"	-> Thai Font mode= 1 PASS
"3 ON"	-> Thai Font mode = 3 PASS
"4 OFF"	-> UPOS Write = Enabled
"4 ON"	-> UPOS Write = Disabled
"5 OFF" "6 OFF" "7 OFF" "8 OFF"	-> Print Density = 100%
"5 ON" "6 OFF" "7 OFF" "8 OFF"	-> Print Density = 105%
"5 OFF" "6 ON" "7 OFF" "8 OFF"	-> Print Density = 110%
"5 ON" "6 ON" "7 OFF" "8 OFF"	-> Print Density = 115%
"5 OFF" "6 OFF" "7 ON" "8 OFF"	-> Print Density = 120%
"5 ON" "6 OFF" "7 ON" "8 OFF"	-> Print Density = 125%
"5 OFF" "6 ON" "7 ON" "8 OFF"	-> Print Density = 130%
"5 ON" "6 ON" "7 ON" "8 OFF"	-> Print Density = 95%
"5 OFF" "6 OFF" "7 OFF" "8 ON"	-> Print Density = 90%
"5 ON" "6 OFF" "7 OFF" "8 ON"	-> Print Density = 85%
"5 OFF" "6 ON" "7 OFF" "8 ON"	-> Print Density = 80%

. PP-6800 Software switch 3 definition

"1 OFF"	-> Paper Feed Backward before print = Enabled
"1 ON"	-> Paper Feed Backward before print = Disabled
"2 OFF"	-> Fixed to OFF
"3 OFF"	-> Fixed to OFF
"4 OFF"	-> Fixed to OFF
"5 OFF"	-> Fixed to OFF
"6 OFF"	-> Fixed to OFF
"7 OFF"	-> Fixed to OFF
"8 OFF"	-> Fixed to OFF

. HS 3inch Printer Software switch 3 definition

"1 OFF"	-> UPOS Write = Enabled
"1 ON"	-> UPOS Write = Disabled
"2 OFF"	-> Beep Sound after Cut paper = Disable
"2 ON"	-> Beep Sound after Cut paper = Enable
"3 OFF" "4 OFF" "5 OFF"	-> Print Density = 100%
"3 ON" "4 OFF" "5 OFF"	-> Print Density = 110%
"3 OFF" "4 ON" "5 OFF"	-> Print Density = 120%
"3 ON" "4 ON" "5 OFF"	-> Print Density = 130%
"6 OFF"	-> Print Speed = 170 mm/s
"6 ON"	-> Print Speed = 200 mm/s
"7 OFF"	-> Thai Font mode= 1 PASS
"7 ON"	-> Thai Font mode = 3 PASS
"8 OFF"	-> Cover Open message = Disabled
"8 ON"	-> Cover Open message = Enabled

f. Software Switch 4

. PP-9000 Software switch 4 definition

"1 OFF"	-> Paper Feed Back = Enabled
"1 ON"	-> Paper Feed Back = Disabled
"2 OFF" "3 OFF"	-> Barcode Height Reduction = Disabled
"2 ON" "3 OFF"	-> Barcode Height Reduction = 25%
"2 OFF" "3 ON"	-> Barcode Height Reduction = 50%
"2 ON" "3 ON"	-> Barcode Height Reduction = 75%
"4 OFF" "4 OFF"	-> Line Space Reduction = Disabled
"4 ON" "4 OFF"	-> Line Space Reduction = 25%
"4 OFF" "4 ON"	-> Line Space Reduction = 50%
"4 ON" "4 ON"	-> Line Space Reduction = 75%
"6 OFF" "6 OFF"	-> Line Feed Reduction = Disabled
"6 ON" "6 OFF"	-> Line Feed Reduction = 25%
"6 OFF" "6 ON"	-> Line Feed Reduction = 50%
"6 ON" "6 ON"	-> Line Feed Reduction = 75%
"8 OFF"	Reserve

. PP-8800 Software switch 4 definition

"1 OFF"	-> Paper Feed Back = Enabled
"1 ON"	-> Paper Feed Back = Disabled
"2 OFF" "3 OFF"	-> Barcode Height Reduction = Disabled
"2 ON" "3 OFF"	-> Barcode Height Reduction = 25%
"2 OFF" "3 ON"	-> Barcode Height Reduction = 50%
"2 ON" "3 ON"	-> Barcode Height Reduction = 75%
"4 OFF" "5 OFF"	-> Line Space Reduction = Disabled
"4 ON" "5 OFF"	-> Line Space Reduction = 25%
"4 OFF" "5 ON"	-> Line Space Reduction = 50%
"4 ON" "5 ON"	-> Line Space Reduction = 75%
"6 OFF" "7 OFF"	-> Line Feed Reduction = Disabled
"6 ON" "7 OFF"	-> Line Feed Reduction = 25%
"6 OFF" "7 ON"	-> Line Feed Reduction = 50%
"6 ON" "7 ON"	-> Line Feed Reduction = 75%
"8 OFF"	Reserve

. PP-6900 Software switch 4 definition

"1 OFF"	-> Paper Feed Back = Enabled
"1 ON"	-> Paper Feed Back = Disabled
"2 OFF" "3 OFF"	-> Barcode Height Reduction = Disabled
"2 ON" "3 OFF"	-> Barcode Height Reduction = 25%
"2 OFF" "3 ON"	-> Barcode Height Reduction = 50%
"2 ON" "3 ON"	-> Barcode Height Reduction = 75%
"4 OFF" "5 OFF"	-> Line Space Reduction = Disabled
"4 ON" "5 OFF"	-> Line Space Reduction = 25%
"4 OFF" "5 ON"	-> Line Space Reduction = 50%
"4 ON" "5 ON"	-> Line Space Reduction = 75%
"6 OFF" "7 OFF"	-> Line Feed Reduction = Disabled
"6 ON" "7 OFF"	-> Line Feed Reduction = 25%
"6 OFF" "7 ON"	-> Line Feed Reduction = 50%
"6 ON" "7 ON"	-> Line Feed Reduction = 75%
"8 OFF"	Reserve

. HS 3inch Printer Software switch 4 definition

"1 OFF"	-> Print Speed 120mm/s = Disable
"1 ON"	-> Print Speed 120mm/s = Enabled
"2 OFF" "3 OFF"	-> Barcode Height Reduction = Disabled
"2 ON" "3 OFF"	-> Barcode Height Reduction = 25%
"2 OFF" "3 ON"	-> Barcode Height Reduction = 50%
"2 ON" "3 ON"	-> Barcode Height Reduction = 75%
"4 OFF" "5 OFF"	-> Line Space Reduction = Disabled
"4 ON" "5 OFF"	-> Line Space Reduction = 25%
"4 OFF" "5 ON"	-> Line Space Reduction = 50%
"4 ON" "5 ON"	-> Line Space Reduction = 75%
"6 OFF" "7 OFF"	-> Line Feed Reduction = Disabled
"6 ON" "7 OFF"	-> Line Feed Reduction = 25%
"6 OFF" "7 ON"	-> Line Feed Reduction = 50%
"6 ON" "7 ON"	-> Line Feed Reduction = 75%
"8 OFF"	Reserve

g. Additional Software Switch

. Supported Code page

0	- 437 Standard
1	- Katakana Japanese
2	- 850 Multilingual (LatinI)
3	- 860 Portuguese
4	- 863 Canadian-French
5	- 865 Nordic
17	- 866 Cyrillic
18	- 852 Latin 2
19	- 858 Multilingual (Latin+Euro)
21	- 862 Hebrew
22	- 864 Arabic
24	- 1253 Windows Greek
25	- 1254 Windows Turkish
26	- 1257 Windows Baltic
27	- 1256 Windows Arabic (Farsi)
28	- 1251 Windows Cyrillic
29	- 737 Greek
31	- Thai character code page 14
33	- 1255 Hebrew New code
34	- Thai character code page 11
36	- 855 Cyrillic
37	- 857 Turkish
250	- LITHUANIA

. Supported International Character Set

0 - U.S.A.
1 - France
2 - Germany
3 - U.K.
4 - Denmark I
5 - Sweden
6 - Italy
7 - Spain I
8 - Japan
9 - Norway
10- Denmark II
11- Spain II
12- Latin America
13- Korea
15- Ex-Yugoslavia